

# Getting started with **genoPlotR**

Lionel Guy

January 25, 2019

## Contents

<b>1</b>	<b>Quick start</b>	<b>2</b>
<b>2</b>	<b>Getting help</b>	<b>3</b>
<b>3</b>	<b>Objects in <b>genoPlotR</b></b>	<b>3</b>
3.1	<code>dna_seg</code> . . . . .	3
3.2	<code>comparison</code> . . . . .	4
3.3	<code>annotation</code> . . . . .	4
3.4	<code>tree</code> . . . . .	5
<b>4</b>	<b>Reading data</b>	<b>5</b>
4.1	DNA segments . . . . .	5
4.2	Comparisons . . . . .	5
4.3	Mauve output . . . . .	6
<b>5</b>	<b>Plotting data</b>	<b>6</b>
<b>6</b>	<b>Other useful functions</b>	<b>6</b>
<b>7</b>	<b>Examples</b>	<b>7</b>
7.1	Example 1: A very simple example . . . . .	7
7.1.1	Data generation and a very simple plot . . . . .	7
7.1.2	A more elaborate plot . . . . .	8
7.2	Example 2: Generating data online . . . . .	9
7.2.1	Retrieving <code>dna_seg</code> data . . . . .	9
7.2.2	Performing web-based BLAST and retrieving result . . .	10
7.2.3	Plotting . . . . .	10
7.3	Example 3: Mauve alignment of four <i>Bartonella</i> genomes . . . .	10
7.4	Example 4: Several sub-segments of four <i>Bartonella</i> genomes . .	11
7.5	Example 5: Two segments of the Y chromosome in human and chimp . . . . .	13
7.6	Example 6: Combining several <b>genoPlotR</b> figures and annotating thefigure . . . . .	14
7.7	Example 7: Using user-defined <code>gene_type</code> and <code>seg_plot</code> . . . . .	16

## Introduction

The **genoPlotR** package is intended to produce publication-grade graphics of gene and genome maps. With the amazing speed of data production of new DNA sequencing techniques and the increase in the number of software available to compare these sequences, there is a great need to graphically represent these sequences and their comparisons. A number of packages already exist (Artemis, ACT, mauve), but none of them produces easily reproducible, publication-grade graphics. The goal of this package is to fill in that gap.

This document provides an introduction to **genoPlotR**, providing the user with examples of increasing complexity. It is not meant as a comprehensive guide to all the functions and options of the package, but rather as a first approach to the package.

To load the library in a R session, type:

```
> library(genoPlotR)
```

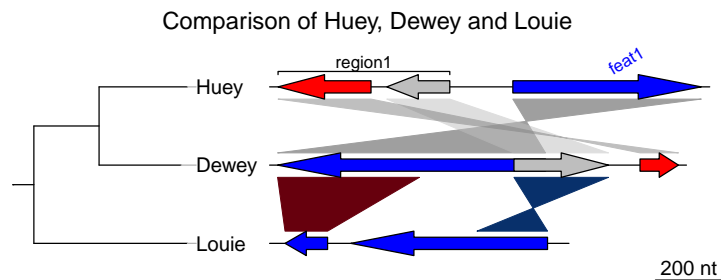
## 1 Quick start

Loading the simplest dataset, applying a color scheme and some limits to the plotting aread, adding a tree and some annotations. For more details about that plot, refer to the first of the examples developed below.

```
> data(three_genes)
> comparisons[[1]]$col <- apply_color_scheme(c(0.6, 0.4, 0.5), "grey")
> names <- c("Huey", "Dewey", "Louie")
> names(dna_segs) <- names
> tree <- newick2phylog("((Huey:4.2,Dewey:3.9):3.1,Louie:7.3):1);")
> mid_pos <- middle(dna_segs[[1]])
> xlims <- list(c(Inf, -Inf), c(-Inf, Inf), c(1850, 2800))
> annot <- annotation(x1=c(mid_pos[1], dna_segs[[1]]$end[2]),
+                    x2=c(NA, dna_segs[[1]]$end[3]),
+                    text=c(dna_segs[[1]]$name[1], "region1"),
+                    rot=c(30, 0), col=c("blue", "black"))
```

Now plotting these three segments:

```
> plot_gene_map(dna_segs=dna_segs, comparisons=comparisons,
+              annotations=annot, annotation_height=1.3,
+              tree=tree, tree_width=2,
+              xlims=xlims,
+              main="Comparison of Huey, Dewey and Louie")
>
```



## 2 Getting help

There are various ways to get help with **genoPlotR**. First, you can start the general help in a web browser, and then click on “packages” and find **genoPlotR** in the list. It will provide a list of the functions available. The first link in the list leads to a very general description of the package.

```
> help.start()
```

Another way of obtaining the list of functions present in the package is to run

```
> library(help=genoPlotR)
```

A lot of examples and help are available in the main functions, i.e. the reading functions (the various `read_dna_seg_from*` and `read_comparison_from*` functions) and the main plotting function, `plot_gene_map`.

```
> help("read_functions")
> help("plot_gene_map")
```

Finally, the web page on R-forge (<http://genoplotr.r-forge.r-project.org/>) provides ways to get in touch with the **genoPlotR** community and to submit bugs and feature requests.

## 3 Objects in genoPlotR

This section will give an overview of the different types of R objects in **genoPlotR**.

### 3.1 dna\_seg

A `dna_seg` object is a collection of genes or elements along a genome, to be represented on a map.

`dna_seg` objects need to have 4 columns, `name`, `start`, `end` and `strand`. Extra columns with names `col`, `lty`, `lwd`, `pch`, `cex`, `gene_type` will be used in the plotting process. Other extra columns will be kept in the object, but not used.

```
> names1 <- c("feat1", "feat2", "feat3")
> starts1 <- c(2, 1000, 1050)
```

```

> ends1 <- c(600, 800, 1345)
> strands1 <- c("-", -1, 1)
> cols1 <- c("blue", "grey", "red")
> df1 <- data.frame(name=names1, start=starts1, end=ends1,
+                   strand=strands1, col=cols1)
> dna_seg1 <- dna_seg(df1)
> str(dna_seg1)

```

```

Classes 'dna_seg' and 'data.frame':      3 obs. of  11 variables:
 $ name      : chr  "feat1" "feat2" "feat3"
 $ start     : num  2 1000 1050
 $ end       : num  600 800 1345
 $ strand    : num  -1 -1 1
 $ col       : chr   "blue" "grey" "red"
 $ fill      : chr   "blue" "blue" "blue"
 $ lty       : num   1 1 1
 $ lwd       : num   1 1 1
 $ pch       : num   8 8 8
 $ cex       : num   1 1 1
 $ gene_type: chr   "arrows" "arrows" "arrows"

```

### 3.2 comparison

A comparison is a collection of similarities, representing the comparison between two DNA segments.

Objects (either data frames or lists) should have at least named elements `start1`, `end1`, `start2` and `end2`. In addition, it can use a `color` column, that will give the color of each comparison. Additional numeric columns can be used for automatic color-coding (via `apply_color_scheme`).

```

> starts1 <- c(2, 1000, 1050)
> ends1 <- c(600, 800, 1345)
> starts2 <- c(50, 800, 1200)
> ends2 <- c(900, 1100, 1322)
> comparison1 <- as.comparison(data.frame(start1=starts1, end1=ends1,
+                                         start2=starts2, end2=ends2))
> str(comparison1)

```

```

Classes 'comparison' and 'data.frame':      3 obs. of  5 variables:
 $ start1    : num  2 1000 1050
 $ end1      : num  600 800 1345
 $ start2    : num  50 800 1200
 $ end2      : num  900 1100 1322
 $ direction : num  1 -1 1

```

### 3.3 annotation

An annotation object is used to annotate a DNA segment. It has labels attached to positions. Each label can be attached to a single position or to a range.

```
> mid_pos <- middle(dna_segs[[1]])
> annot1 <- annotation(x1=mid_pos, text=dna_segs[[1]]$name)
> str(annot1)
```

```
Classes 'annotation' and 'data.frame':      3 obs. of  5 variables:
 $ x1   : num  301 900 1198
 $ x2   : logi  NA NA NA
 $ text : chr  "feat1" "feat2" "feat3"
 $ color: chr  "black" "black" "black"
 $ rot  : num  0 0 0
```

### 3.4 tree

A tree description in Newick format can be parsed using **ade4** package.

```
> tree <- newick2phylog("((A_aaa:4.2,B_bbb:3.9):3.1,C_ccc:7.3):1);")
> str(tree$leaves)
```

```
Named num [1:3] 4.2 3.9 7.3
- attr(*, "names")= chr [1:3] "A_aaa" "B_bbb" "C_ccc"
```

## 4 Reading data

### 4.1 DNA segments

Several formats can be read by **genoPlotR** to produce `dna_seg` objects:

- EMBL files (`read_dna_seg_from_embl`)
- Genbank files (`read_dna_seg_from_genbank`)
- PTT (protein table) files, tabular versions of Genbank files (`read_dna_seg_from_ptt`)
- User generated tabular files (`read_dna_seg_from_ptt`)

The function `read_dna_seg_from_file` is a wrapper function, that will attempt to guess the correct format of the file.

The first three files are common biological formats and can be downloaded from major databases, such as the NCBI (<http://www.ncbi.nlm.nih.gov/>) and the ENA (<http://www.ebi.ac.uk/ena>). The definition of EMBL and Genbank files can be found at [ftp://ftp.ebi.ac.uk/pub/databases/embl/doc/FT\\_current.html](ftp://ftp.ebi.ac.uk/pub/databases/embl/doc/FT_current.html).

### 4.2 Comparisons

**genoPlotR** can read tabular files, either user-generated tab files (`read_comparison_from_tab`), or from BLAST output (`read_comparison_from_blast`). To produce files that are readable by **genoPlotR**, the `-m 8` or `9` option should be used in `blastall`, or `-outfmt 6` or `7` with the BLAST+ suite.

### 4.3 Mauve output

The backbone output of the Mauve genome aligner (<http://darlinglab.org/mauve/mauve.html>) can be parsed using `read_comparison_from_blast`<sup>1</sup>.

The function will return a list consisting of a list of `dna_seg` objects and the corresponding `comparisons`.

## 5 Plotting data

There is only one plotting function in **genoPlotR**, `plot_gene_map`. Many arguments are available, but here is a list of the most important. Check the documentation for a more thorough description.

`dna_segs` A list of DNA segment objects.

`comparisons` A list of comparisons. Should contain one element less than the previous.

`tree` An eventual phylogenetic tree to be plotted at the left of the figure.

`annotations` An annotation object, or a list of annotations. Will display annotations to the first, or to all DNA segments, respectively.

`xlims` A list of even-numbered numeric vectors, giving the borders of sub-segments to be plotted. The vector `c(1,5000,8000,6000)` will display two sub-segments (1 to 5000 and 6000 to 8000), the second being in reverse orientation.

`main` A title to the plot.

`scale` Should a scale be displayed at the bottom right of the plot?

`dna_seg_scale` Allows to control the addition of scales to each segments. If simply `TRUE`, will display a scale on each segment. If a vector, a scale will be displayed for the corresponding `TRUE` element.

`global_color_scheme` Allows to recalculate the colors of the comparisons, to have colors corresponding to the same scale for all comparisons.

`plot_new` Turn off to avoid creating a new plot. Especially useful to integrate a **genoPlotR** plot in a larger figure.

## 6 Other useful functions

`apply_color_scheme` Allows to apply a gray scale or shades of red and blue to a comparison.

`middle` Useful to get the middle of a gene, especially to create annotations.

Datasets Type `data(package="genoPlotR")` to get the full list.

---

<sup>1</sup>Tested with Mauve 2.3.1

## 7 Examples

This section gives step-by-step examples, of gradual complexity. The last one shows how to combine several plots and to annotate already generated plots.

For all examples, the first step is to load the library.

```
> library(genoPlotR)
```

### 7.1 Example 1: A very simple example

The data used in this example is a dataset included in **genoPlotR**, but for the sake of demonstration, it will be recreated from scratch. To retrieve data from the package, use `data(three_genes)`.

#### 7.1.1 Data generation and a very simple plot

First, three `dna_segs` are generated, from data frames with columns `name`, `start`, `end`, `strand` and `col`.

```
> df1 <- data.frame(name=c("feat1", "feat2", "feat3"),
+                   start=c(2, 1000, 1050),
+                   end=c(600, 800, 1345),
+                   strand=c(-1, -1, 1),
+                   col=c("blue", "grey", "red"))
> dna_seg1 <- dna_seg(df1)
> df2 <- data.frame(name=c("feat1", "feat2", "feat3"),
+                   start=c(50, 800, 1200),
+                   end=c(900, 1100, 1322),
+                   strand=c(-1, 1, 1),
+                   col=c("blue", "grey", "red"))
> dna_seg2 <- dna_seg(df2)
> df3 <- data.frame(name=c("feat1", "feat2", "feat3"),
+                   start=c(1899, 2108, 2803),
+                   end=c(2034, 2732, 3620),
+                   strand=c(-1, -1, 1),
+                   col=rep("blue", 3))
> dna_seg3 <- dna_seg(df3)
> dna_segs <- list(dna_seg1, dna_seg2, dna_seg3)
```

Then, create two `comparisons` objects from data frames with columns `start1`, `end1`, `start2`, `end2` and `col`. In the first comparison, the starts and ends correspond to the genes created above.

```
> df4 <- data.frame(start1=dna_seg1$start,
+                   end1=dna_seg1$end,
+                   start2=dna_seg2$start,
+                   end2=dna_seg2$end)
> comparison1 <- comparison(df4)
> df5 <- data.frame(start1=c(50, 800),
+                   end1=c(500, 1100),
+                   start2=c(1899, 2732),
```

```

+           end2=c(2034, 2508),
+           col=c("#67000D", "#08306B"))
> comparison2 <- comparison(df5)
> comparisons <- list(comparison1, comparison2)

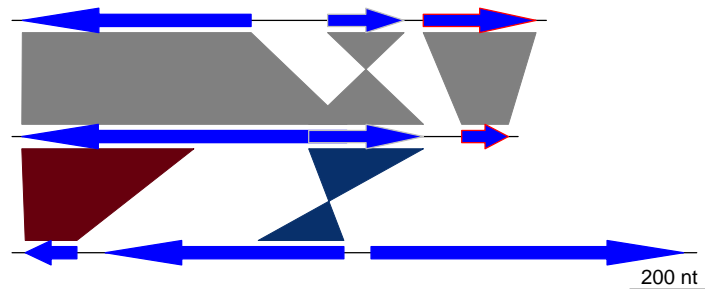
```

This constitutes all the material required to create a basic plot.

```

> plot_gene_map(dna_segs=dna_segs, comparisons=comparisons)

```



### 7.1.2 A more elaborate plot

Many options can be added to this simple plot. To begin with, the first comparison will be colored in grey scale, using an arbitrary scale passed to the function `apply_color_scheme`.

```

> comparisons[[1]]$col <- apply_color_scheme(c(0.6, 0.4, 0.5), "grey")

```

Second, names and a phylogenetic tree are prepared. The function `newick2phylog` from the package `ade4` is used to prepare an object suitable for `genoPlotR`. The elements of the list of `dna_segs` must be named and correspond to the labels of the tree object, to avoid confusion.

```

> names <- c("Huey", "Dewey", "Louie")
> names(dna_segs) <- names
> tree_HDL <- newick2phylog("(((Huey:4.2,Dewey:3.9):3.1,Louie:7.3):1);")

```

Third, annotations to the first segment are added. The first gene is annotated in its middle (thus the use of `middle` function), while a region comprising the second and third gene are annotated with a square bracket. Note the use of a numeric value for `x1` and `NA` for the first gene, and the use of two numeric values for the second region.

```

> mid_pos <- middle(dna_segs[[1]])
> annot <- annotation(x1=c(mid_pos[1], dna_segs[[1]]$end[2]),
+                    x2=c(NA, dna_segs[[1]]$end[3]),
+                    text=c(dna_segs[[1]]$name[1], "region1"),
+                    rot=c(30, 0), col=c("grey", "black"))

```

Finally, the plot is drawn, adding a title, allowing 2 inches for the tree width (instead of the default 20% of the plot), and changing the annotation space to 1.3 lines (as opposed to 1 by default). The different options can be checked by removing/adding the different arguments to `plot_gene_map`.

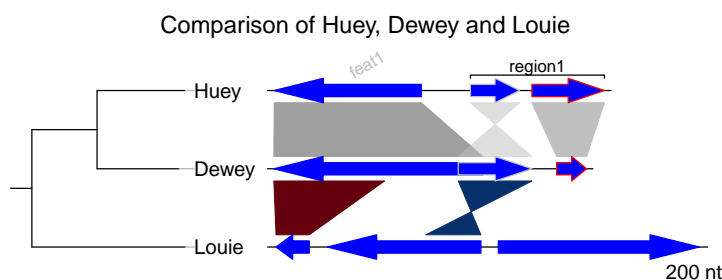


```

> plot_gene_map(dna_segs=dna_segs, comparisons=comparisons,
+             annotations=annot, annotation_height=1.3,
+             tree=tree_HDL, tree_width=2,
+             main="Comparison of Huey, Dewey and Louie")

```

To explore the different options, new windows can be opened by using `x11()` or `window()`, depending on the OS, or saved to files using for example `png()` or `pdf()`. To finish the plot, the function `dev.off()` should be called.



The plot can be saved by adding, in front of the call to `plot_gene_map`, a call to one of the graphical device functions of R (e.g. `pdf()`, `png()`, `jpeg()`). To finish the plot, the function `dev.off()` should be called.

## 7.2 Example 2: Generating data online

This section will give an example of how data can be retrieved and generated online, using the resources available at the NCBI <http://www.ncbi.nlm.nih.gov/>. This example was devised on 5/3/2010, and given the relatively rapid rate of changes in public databases, it is possible that part or all of this example becomes obsolete. Please contact the author of this document (lionel.guy@ebc.uu.se) in such a case.

In this example, the genomes of *Bartonella henselae* (RefSeq accession NC\_005956) and *Bartonella quintana* (RefSeq accession NC\_005955) will be compared.

### 7.2.1 Retrieving dna\_seg data

To retrieve Genbank files, the Entrez Nucleotide Database can be directly queried, provided that the accession number is known. In such a case, the database can be accessed from the home page of NCBI (<http://www.ncbi.nlm.nih.gov/>), by entering the accession number (e.g. NC\_005956) in the search field and by selecting “Nucleotide” in the “Search” list. The Genbank file is then displayed. It can be saved in a suitable format by clicking on the “Download” link and by selecting “GenBank”.

If the accession number is unknown, the nucleotide database can be queried for the name of the organism, or accessed via a list (<https://www.ncbi.nlm.nih.gov/genome/browse/>). In that list, the files can be directly retrieved from the ftp site of the NCBI (by clicking the letter “F” in the corresponding row). Alternatively, it is possible to click on the accession number, which leads to a page summarizing information on the queried genome. Access to the page

described above is achieved by clicking on the accession number linked under the title “Refseq”.

Repeat the procedure for the other genome (NC\_005955).

### 7.2.2 Performing web-based BLAST and retrieving result

The two previously retrieved genomes can be compared with BLAST, more precisely using the `bl2seq` feature of BLAST.

Access to the BLAST section of the NCBI website is achieved by clicking on BLAST in the “Popular resources” section of the NCBI home page, or by using a direct link (<http://blast.ncbi.nlm.nih.gov/Blast.cgi>). A link to the “bl2seq” resource is presented in the “Specialized BLAST” section.

There, the genomes can be aligned by entering the two genome accession numbers. The other arguments to BLAST can then be modified at will to suit the needs of the comparison. Once the BLAST search is run, the hit table (which can be read by `genoPlotR` can be downloaded by clicking on “Download” and “Hit Table(text)” in the result page.

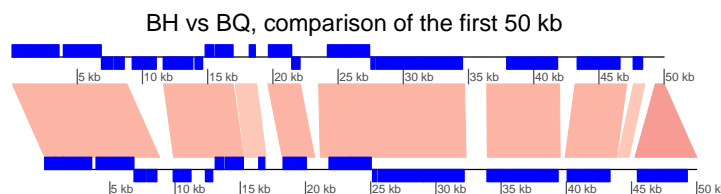
### 7.2.3 Plotting

Provided that the Genbank files and their comparison have been saved under the correct names in the directory where R was started, they can be parsed directly by `genoPlotR`.

```
> BH <- try(read_dna_seg_from_file("NC_005956.gbk"))
> BQ <- try(read_dna_seg_from_file("NC_005955.gbk"))
> BH_vs_BQ <- try(read_comparison_from_blast("NC_005956_vs_NC_005955.blast"))
```

The data, or a sample thereof (using `xlims`) can now be plotted.

```
> xlims <- list(c(1,50000), c(1,50000))
> plot_gene_map(dna_segs=list(BH, BQ),
+               comparisons=list(BH_vs_BQ),
+               xlims=xlims,
+               main="BH vs BQ, comparison of the first 50 kb",
+               gene_type="side_blocks",
+               dna_seg_scale=TRUE, scale=FALSE)
>
```



## 7.3 Example 3: Mauve alignment of four *Bartonella* genomes

`genoPlotR` is able to parse the backbone file produced by Mauve (for details on the format, see <http://darlinglab.org/mauve/user-guide/files.html>).

The elements of the DNA segments are no longer genes, but Mauve blocks. Similarly, the comparison reflects the correspondances between these blocks. The strand indicates the orientation of the block with respect to a reference, which by default is the first genome in the comparison. A single list is returned, which contains two lists, one containing the `dna_segs` and the other one the `comparisons`.

The genomes in the backbone file are not named, so it is advised to be cautious in the order of the names given.

In this example, 4 genomes of *Bartonella* have been compared with Mauve 2.3.1. The smaller blocks (smaller than 10 kb) are filtered out, and the second genome (which is the largest) is taken as the reference. The data set can also be accessed in the package by running `data(mauve_bbone)`.

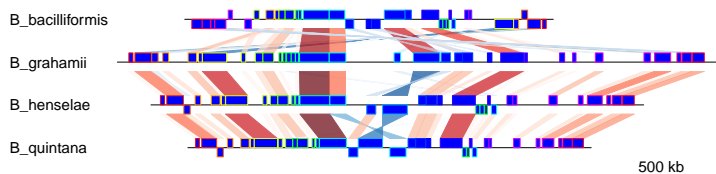
```
> bbone_file <- system.file('extdata/barto.backbone', package = 'genoPlotR')
> bbone <- read_mauve_backbone(bbone_file, ref=2, filter_low=10000)
> names <- c("B_bacilliformis", "B_grahamii", "B_henselae", "B_quintana")
> names(bbone$dna_segs) <- names
```

Calculating the lengths by adding the length on both sides of the comparisons

```
> for (i in 1:length(bbone$comparisons)){
+   cmp <- bbone$comparisons[[i]]
+   bbone$comparisons[[i]]$length <-
+     abs(cmp$end1 - cmp$start1) + abs(cmp$end2 - cmp$start2)
+ }
```

Now plotting, using `global_color_scheme` to color the segments according to their lengths.

```
> plot_gene_map(dna_segs=bbone$dna_segs,
+               comparisons=bbone$comparisons,
+               global_color_scheme=c("length", "increasing", "red_blue", 0.7),
+               override_color_schemes=TRUE)
```



#### 7.4 Example 4: Several sub-segments of four *Bartonella* genomes

This examples presents how to use the `xlims` argument to represent several sub-segments of the same segment, and how to show them in a reverse orientation.

The data used here is also a comparison between four *Bartonella* genomes (see above), but the comparison has been performed using BLAST. The dataset is available in the package (`barto`).

First, the data is loaded and a tree is created.

```
> data(barto)
> tree_barto <- newick2phylog("(BB:2.5,(BG:1.8,(BH:1,BQ:0.8):1.9):3);")
```

The `xlims` argument is then created. It is a list with as many elements as there are `dna_segs`. Each element is an even-numbered numeric vector, containing the left and right border of each sub-segment, consecutively. In the first DNA segment, two sub-segments are shown: between 1,415,000 and 1,445,000 in a reverse orientation, and between 1,380,000 and 1,412,000, in “normal” orientation. In the remaining segments, 3, 3, and 1 subsegments are shown, respectively, all in normal orientation.

```
> xlims <- list(c(1445000, 1415000, 1380000, 1412000),
+              c( 10000,  45000,  50000,  83000, 90000, 120000),
+              c( 15000,  36000,  90000, 120000, 74000,  98000),
+              c(  5000,  82000))
```

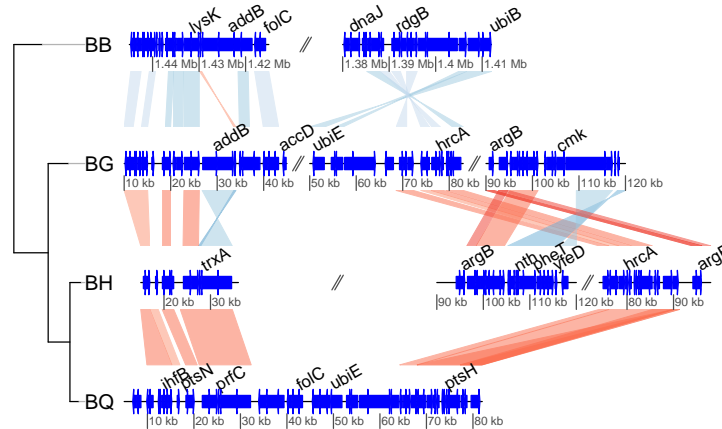
To complete the example, annotations are added. Genes that have a gene name (i.e. these for which the name is not the locus or synonym name) are used to annotate the segment. Only every fourth gene is annotated, to avoid overlapping the tags. The function `middle` is used to retrieve the middle of each element of the DNA segments.

```
> annots <- lapply(barto$dna_segs, function(x){
+   mid <- middle(x)
+   annot <- annotation(x1=mid, text=x$name, rot=30)
+   idx <- grep("[^B]", annot$text, perl=TRUE)
+   annot[idx[idx %% 4 == 0],]
+ })
```

Finally, plot the result, using scales on each DNA segment, adding a title, and not limiting the plotting area to the longest segment, to allow for a better placement of the sub-segments.

```
> plot_gene_map(barto$dna_segs, barto$comparisons, tree=tree_barto,
+              annotations=annots,
+              xlims=xlims,
+              limit_to_longest_dna_seg=FALSE,
+              dna_seg_scale=TRUE, scale=FALSE,
+              main="Comparison of homologous segments in 4 Bartonella genomes")
```

### Comparison of homologous segments in 4 Bartonella genomes



## 7.5 Example 5: Two segments of the Y chromosome in human and chimp

In this example, the ability to plot introns and exons is demonstrated.

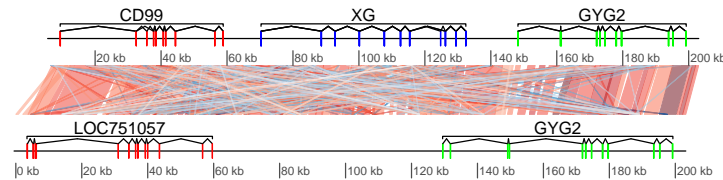
First, data is loaded. The dataset included in the package is used, but any Genbank file containing introns and exons can be used. Some annotations are added: for each segment, the range of each gene is calculated, and corresponding annotations are created.

```
> data(chrY_subseg)
> genes_homo <- unique(chrY_subseg$dna_segs[[1]]$gene)
> x_homo <- sapply(genes_homo, function(x)
+               range(chrY_subseg$dna_segs[[1]]
+                   [chrY_subseg$dna_segs[[1]]$gene == x,])
+           )
> annot_homo <- annotation(x1=x_homo[1,], x2=x_homo[2,],
+                          text=dimnames(x_homo)[[2]])
> genes_pan <- unique(chrY_subseg$dna_segs[[2]]$gene)
> x_pan <- sapply(genes_pan, function(x)
+               range(chrY_subseg$dna_segs[[2]]
+                   [chrY_subseg$dna_segs[[2]]$gene == x,])
+           )
> annot_pan <- annotation(x1=x_pan[1,], x2=x_pan[2,],
+                          text=dimnames(x_pan)[[2]])
```

The segments can be directly plotted, passing the annotations as a list.

```
> main <- "Comparison of two subsegments in H. sapiens and P. troglodytes"
> plot_gene_map(chrY_subseg$dna_segs, chrY_subseg$comparison,
+               annotations=list(annot_homo, annot_pan),
+               dna_seg_scale=TRUE,
+               main=main,
+               scale=FALSE)
```

### Comparison of two subsegments in *H. sapiens* and *P. troglodytes*



## 7.6 Example 6: Combining several `genoPlotR` figures and annotating the figure

In this example, some of the previous plots are combined in a single, multi-panel figure. Using the tools present in the `grid` package, the plot is annotated further. More information is available in the documentation of the `grid` package.

The example here uses R objects built in the previous examples, which should thus be run first.

First, a `viewport` that will contain all plots is pushed in a new page. The plot is divided in three rows, of relative heights 1, 1.3 and 0.8.

```
> pushViewport(viewport(layout=grid.layout(3,1,
+                               heights=unit(c(1,1.3,0.8), rep("null", 3))),
+               name="overall_vp"))
```

The three panels A to C, containing the result of the above examples 4 to 6 are pushed into viewports, calling `upViewport()` after each plot to come back to the main viewport. After the last plot, `upViewport(2)` is called to go up 2 viewports, coming back to the root viewport. Each time, the option `plot_new=FALSE` is used, to avoid plotting in a new page every single panel.

```
> ## Panel A
> pushViewport(viewport(layout.pos.row=1, name="panelA"))
> plot_gene_map(dna_segs=bbone$dna_segs, comparisons=bbone$comparisons,
+               dna_seg_scale=c(FALSE, FALSE, FALSE, TRUE),
+               scale=FALSE, main="A", main_pos="left", plot_new=FALSE)
> upViewport()
> ## Panel B
> pushViewport(viewport(layout.pos.row=2, name="panelB"))
> plot_gene_map(barto$dna_segs, barto$comparisons,
+               annotations=annots, tree=tree_barto, xlims=xlims,
+               limit_to_longest_dna_seg=FALSE, scale=FALSE,
+               dna_seg_scale=TRUE, main="B", main_pos="left",
+               annotation_height=0.6, annotation_cex=0.5,
+               plot_new=FALSE)
> upViewport()
> ## Panel C
> pushViewport(viewport(layout.pos.row=3, name="panelC"))
> plot_gene_map(chrY_subseg$dna_segs, chrY_subseg$comparison,
+               annotations=list(annot_homo, annot_pan),
+               dna_seg_scale=TRUE, scale=FALSE, main="C", main_pos="left",
```

```
+          plot_new=FALSE)
> upViewport(0)
```

The commands `current.vpTree()` and `grid.ls()` can be used to see the current viewport structure, and to see all object names.

```
> grid_list <- grid.ls(grob=TRUE, viewports=TRUE, print=FALSE)
> str(grid_list)
```

List of 6

```
$ name      : chr [1:1339] "ROOT" "overall_vp" "panelA" "oma" ...
$ gDepth   : num [1:1339] 0 0 0 0 0 0 0 0 0 0 ...
$ vpDepth  : num [1:1339] 0 1 2 3 4 5 6 6 5 6 ...
$ gPath    : chr [1:1339] "" "" "" "" ...
$ vpPath   : chr [1:1339] "" "ROOT" "ROOT::overall_vp" "ROOT::overall_vp::panelA" ...
$ type     : chr [1:1339] "vpListing" "vpListing" "vpListing" "vpListing" ...
- attr(*, "class")= chr "flatGridListing"
```

```
> current.vpTree()
```

```
viewport [ROOT]->(viewport [overall_vp]->(viewport [panelA]->(viewport [oma]->(viewport [oma_la
```

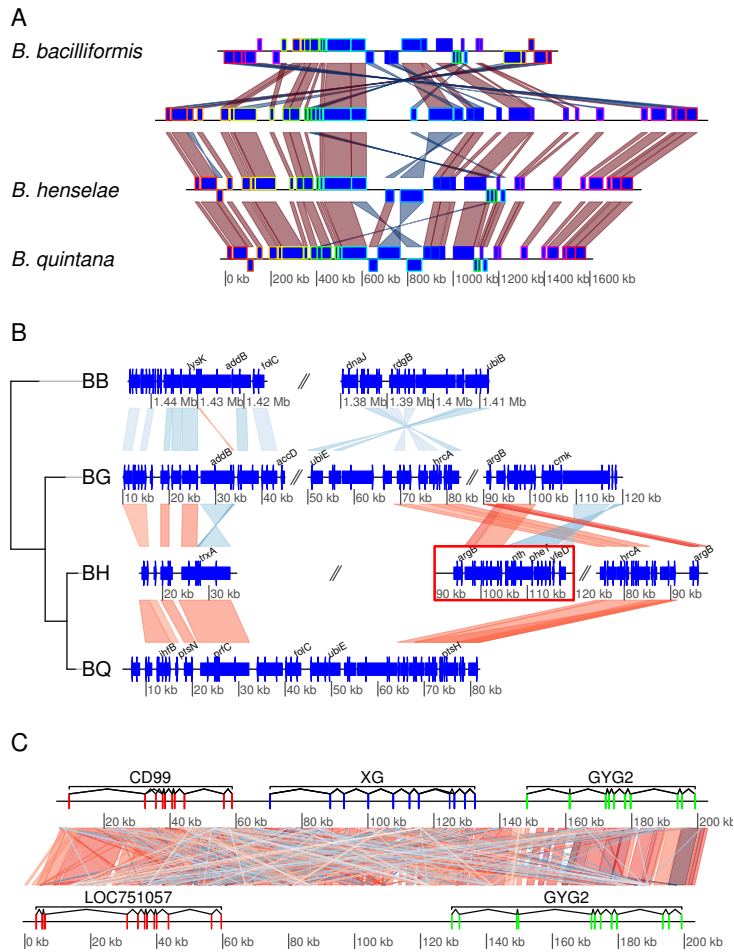
Despite the complexity of the viewport structure, it is possible to identify the previously defined panel A, B and C. Using the `downViewport` commands, it will be possible to find and modify elements of the plots. First, the labels of panel A will be modified to have the names in italics and to replace the underscores by a dot and a space. The second label is also removed. Note the use of `grid.edit` and `grid.remove`. Warning: the whole figure is redrawn for each use of the edition function, it can thus become relatively long.

```
> downViewport("panelA")
> for (i in 1:length(names)){
+   new_label <- sub("_", ". ", names[[i]])
+   grid.edit(paste("label", i, sep="."), label=new_label,
+             gp=gpar(fontface="italic"))
+ }
> grid.remove("label.2")
> upViewport(0)
```

In a second time, a red rectangle will be placed around one subsegment of panel B.

```
> downViewport("panelB")
> downViewport("dna_seg.3.2")
> grid.rect(height = unit(2.2, "npc"), gp=gpar(col="red", lwd=2, fill=0))
> upViewport(0)
```

```
> dev.off()
```



## 7.7 Example 7: Using user-defined `gene_type` and `seg_plot`

In this example, the use of personalized `gene_types` and of `seg_plots` to show data next to DNA segments is demonstrated. The same data as in example 4 is used.

A graphical function is defined, to represent triangles instead of arrows for genes. The triangles are oriented in function of their strand and the transparency is set differently according to a length cut-off, passed with the function. As required, the function has only two arguments, a `gene` which is a row of a `dna_seg`, and the dots (...). Any extra argument passed to `plot_gene_map` will be passed in turn to the `gene_type`-defining function.

```
> starGrob <- function(gene, ...){
+   ## Coordinates for the star
+   x <- sin(((0:5)/2.5)*pi)*(gene$end-gene$start)/2 + (gene$end+gene$start)/2
+   y <- cos(((0:5)/2.5)*pi)*gene$strand*0.5 + 0.5
+   idx <- c(1, 3, 5, 2, 4, 1)
+   ## Attribute line_col only if present in the gene
```



```

+ line_col <- if (!is.null(gene$line_col)) gene$line_col else gene$col
+ ## Having a conditional transparency, depending on a length cut-off
+ ## passed via dots
+ length_cutoff <- list(...)$length_cutoff
+ if (!is.null(length_cutoff)){
+   alpha <- if ((gene$end-gene$start) < length_cutoff) 0.3 else 0.8
+ } else alpha <- 1
+
+ ## Grobs
+ g <- polygonGrob(x[idx], y[idx], gp=gpar(fill=gene$col, col=line_col,
+   lty=gene$lty, lwd=gene$lwd, alpha=alpha),
+   default.units="native")
+ t <- textGrob(label="***", x=(gene$end+gene$start)/2, y=0.5,
+   default.units="native")
+ gList(g, t)
+ }

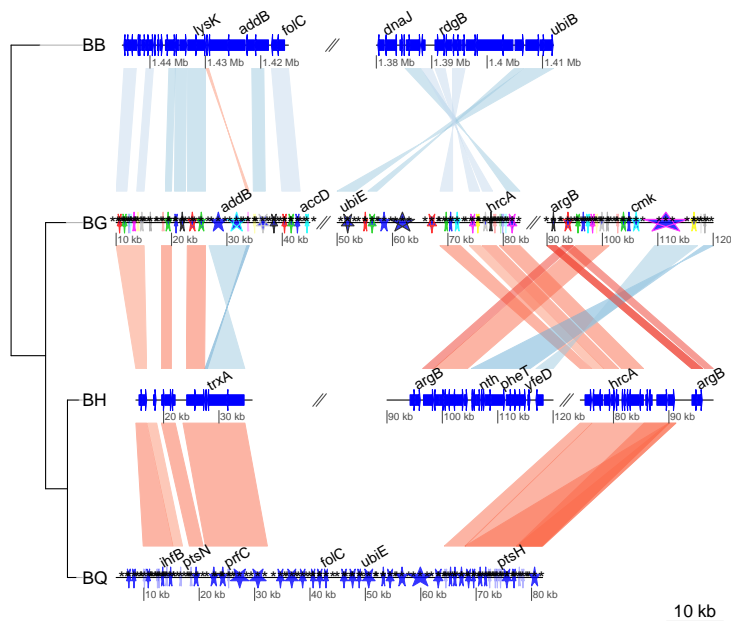
```

To make use of that, the `gene_type` column of the `dna_segs` must be replaced. To make use of the supplementary argument `line_col`, a column is added to the `dna_seg` object. Finally, plot the result.

```

> barto$dna_segs[[2]]$gene_type <- "starGrob"
> barto$dna_segs[[4]]$gene_type <- "starGrob"
> line_col <- rep(1:20, (nrow(barto$dna_segs[[3]]) %% 20)+1)
> barto$dna_segs[[2]]$line_col <- line_col[1:nrow(barto$dna_segs[[2]])]
> plot_gene_map(barto$dna_segs, barto$comparisons, tree = tree_barto,
+   annotations = annots,
+   xlims = xlims,
+   dna_seg_scale = TRUE,
+   length_cutoff = 600)

```



Now, let's plot some random data along with the DNA segment. A standard `grid` function returning a `grob` is used, but it is possible to use personalized functions, as long as they return `grob` or `gList` objects. For example, the function `starGrob` defined in the previous exercise could be modified to be used here.

The `seg_plot` objects are first defined, with the following structure:

```
> seg_plots <- lapply(barto$dna_segs, function(ds){
+   x <- seq(1, range(ds)[2], by=1000)
+   y <- jitter(seq(100, 300, length=length(x)), amount=50)
+   seg_plot(func=linesGrob, args=list(x=x, y=y, gp=gpar(col=grey(0.3), lty=2)))
+ })
> str(seg_plots[[1]])
```

List of 5

```
$ func :function (x = unit(c(0, 1), "npc"), y = unit(c(0, 1), "npc"), default.units = "np
  arrow = NULL, name = NULL, gp = gpar(), vp = NULL)
$ args :List of 4
..$ x      : num [1:1445] 1 1001 2001 3001 4001 ...
..$ y      : num [1:1445] 146.6 78 107.2 78.5 107.3 ...
..$ gp     :List of 2
.. ..$ col: chr "#4D4D4D"
.. ..$ lty: num 2
.. ..- attr(*, "class")= chr "gpar"
..$ default.units: chr "native"
$ xargs: chr [1:5] "x" "x0" "x1" "x2" ...
$ yargs: chr [1:5] "y" "y0" "y1" "y2" ...
$ ylim : NULL
- attr(*, "class")= chr [1:2] "seg_plot" "list"
```

Each `seg_plot` element has a `func` argument, giving the function to use to plot the data, here the `grid` function `linesGrob`. The arguments that are passed to this function are contained in the `args` argument, a list. Notice the use of `gp=gpar(...)`.

The result can then be plotted, and modulated using the arguments `seg_plot_height`, `seg_plot_height_unit`, `seg_plot_yaxis`, and `seg_plot_yaxis_cex`.

```
> plot_gene_map(barto$dna_segs, barto$comparisons, tree = tree_barto,
+   annotations = annots,
+   xlims = xlims,
+   seg_plots = seg_plots,
+   seg_plot_height = 0.5,
+   seg_plot_height_unit = "null",
+   seg_plot_yaxis = 2,
+   seg_plot_yaxis_cex = 0.7)
```

